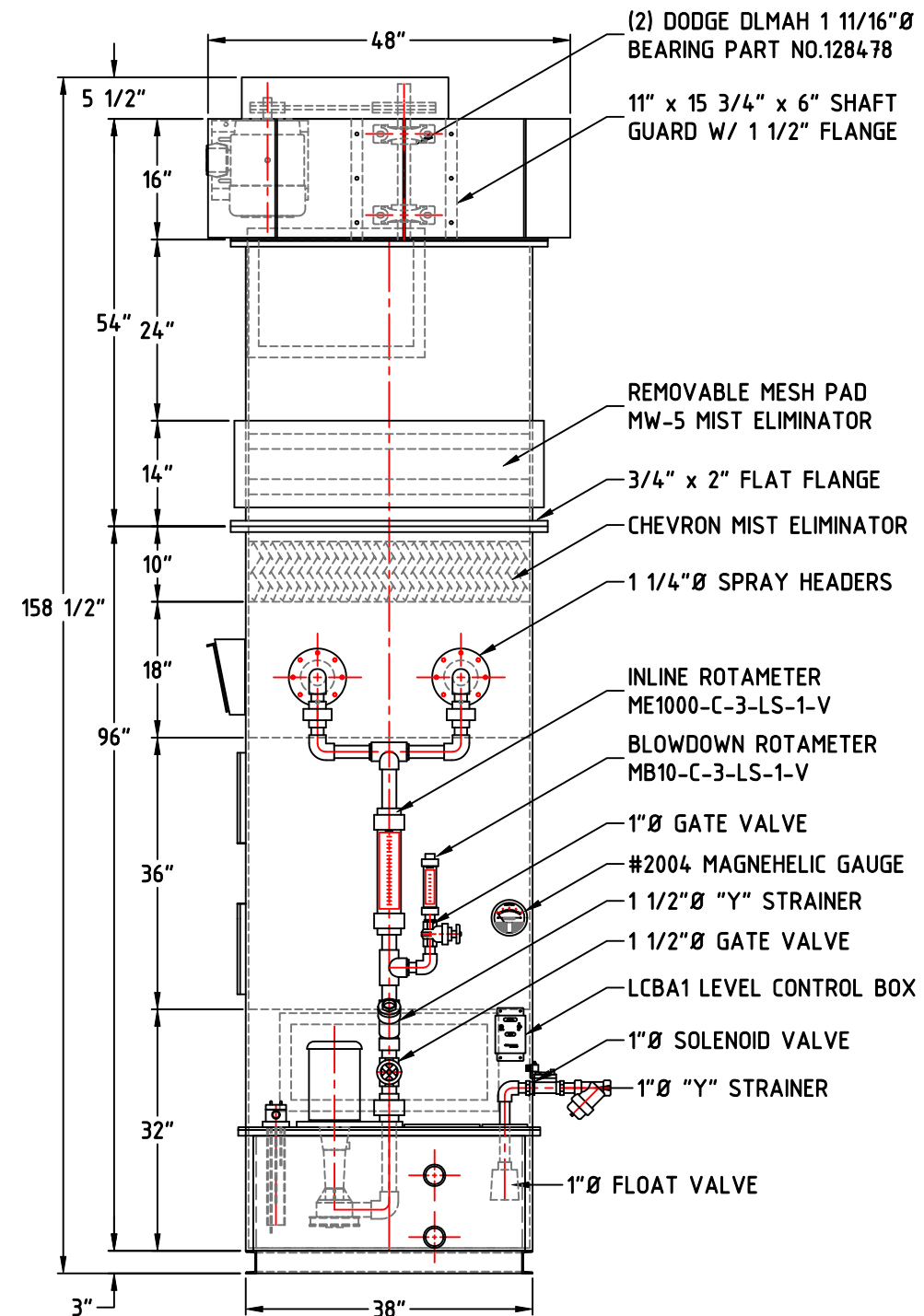
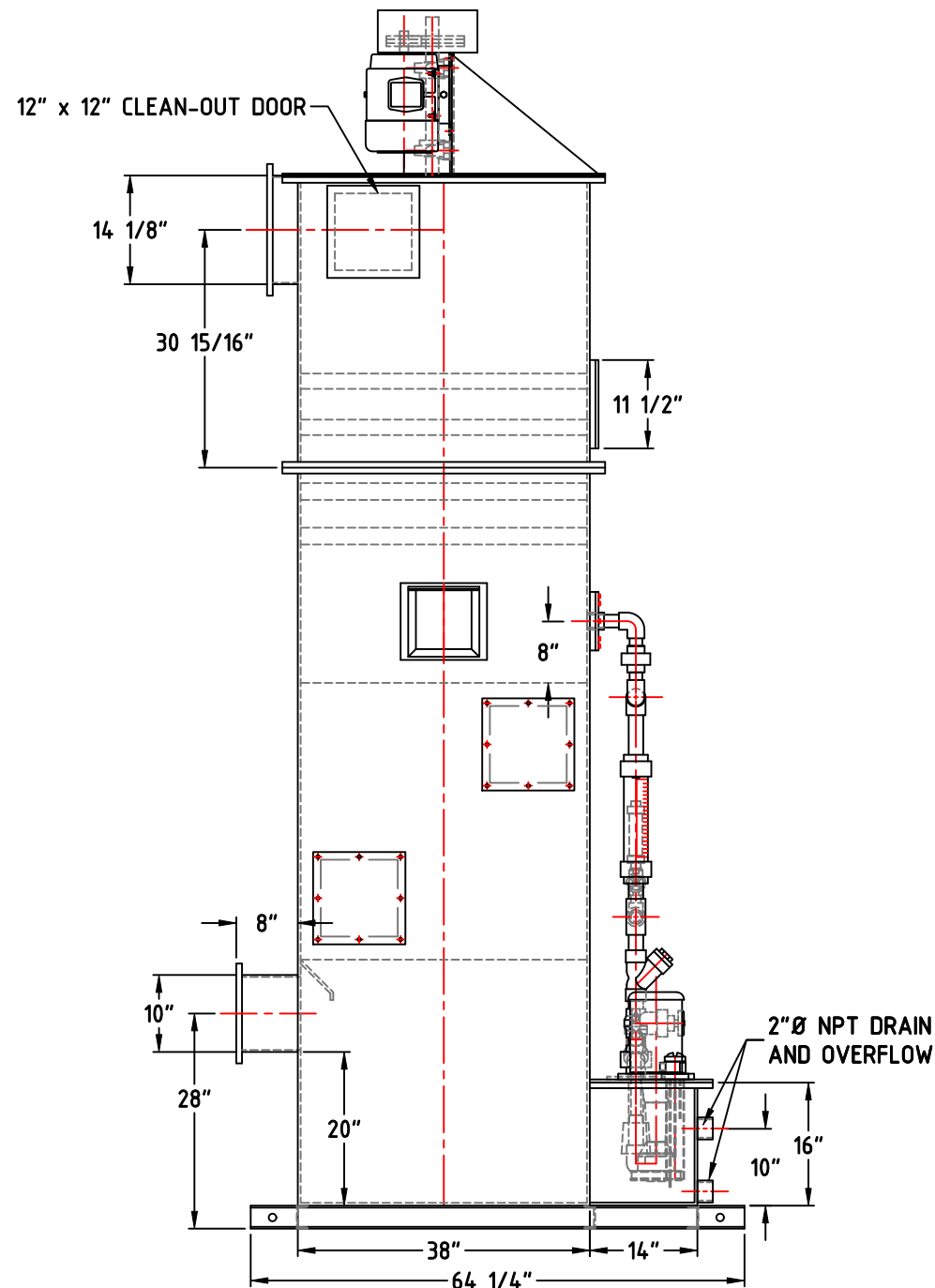


NOTE:

1. SCRUBBER SHELL FABRICATED FROM 3/8" TYPE I GRAY PVC.
2. 12" x 12" PACKING AND CLEANOUT DOOR.
3. 3/4" x 2" EXTERNAL REINFORCING.
4. 3/4" x 1 1/2" INLET AND OUTLET FLANGES.

(2) REQUIRED



REVISIONS			
LET.	CHANGE	DATE	APPROVED

MW-200 FUME SCRUBBER



MIDWEST AIR PRODUCTS CO., INC.
P.O. BOX 5319, TRAVERSE CITY, MI. 49696
PHONE: (231) 941-5865

NOTICE: THIS DESIGN IS THE PROPERTY OF MIDWEST AIR PRODUCTS CO., INC. AND THIS PRINT IS SUBJECT TO RETURN ON DEMAND, IT IS ISSUED ON THE EXPRESS CONDITION THAT IT IS NOT TO BE USED DIRECTLY OR INDIRECTLY IN ANY WAY DETRIMENTAL TO THE INTERESTS OF THE COMPANY.
MIDWEST AIR PRODUCTS CO., INC. HAS A POLICY OF CONTINUOUS PRODUCT DEVELOPMENT AND RESERVES THE RIGHT TO CHANGE DESIGNS AND SPECIFICATIONS WITHOUT NOTICE.

SCRUBBER DATA

MATERIAL	TYPE I GRAY PVC
CFM / ACFM	4,000 / 4,000 CFM
VELOCITY	399 FPM
STATIC PRESSURE	2.5" W.G.
PACKING MEDIA	PRO-PAK 3.5 POLYPRO
PUMP / HP	E01 1/4 - 1 1/2 HP
VOLT/PH CY	230/460/3/60
FULL LOAD AMPS	2.6 @ 460 V
FLOW THROUGH NOZZLES	20 GPM
BLOWDOWN	.12 GPM

FAN DATA BI #18

WHEEL MATERIAL	COATED STEEL
WHEEL RPM	2,096 RPM
BHP	4.8 BHP
STATIC PRESSURE	5.0" W.G.
MOTOR HP/RPM	5 HP 1,750 RPM
MOTOR FRAME	184 T
VOLT/PH/CY	230/460/3/60
FULL LOAD AMPS	7.8 @ 460 V
WHEEL SHEAVE	B48TB
WHEEL BUSHING	1610 x 1 11/16"
MOTOR SHEAVE	B56TB
MOTOR BUSHING	1610 x 1 1/8"
VARIABLE DRIVE	N/A
BELT SIZE	B - 59
BELT QUANTITY	1
SHAFT / SHAFT C	
BEARING SIZE	1 11/16" Ø
DATE	03-16-2017
SCALE	1/2"=10"
DWG NO.	25834C01

CHECKED BY:

JSC
DRAWN BY:

CUSTOMER: SUMMIT CORPORATION OF AMERICA

25834

JOB NO: