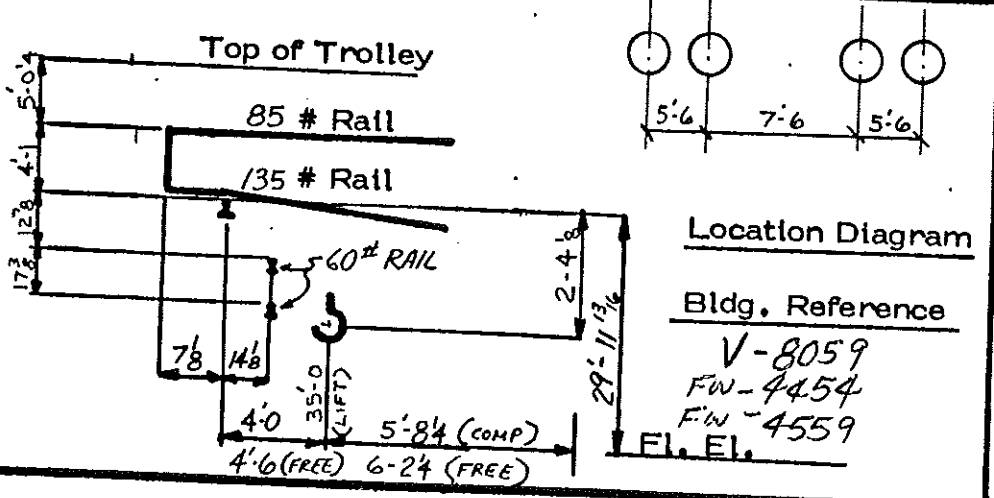


Manufacture CRANE MANUFACTURING #693		DRAWINGS	
Date Installed 1992		Arrgt. of Bridge (D-693-B)	J-229345
Capacity 25TON (WAS 50/25)		Arrgt. of Trolley	J-229301
Span 81'-0 (WAS ORIGINALLY 80'-0)		Arrgt. of Bridge Drive (D-693-B1)	J-229346
Type E.O.T.			
Cab Location SOUTHEAST CORNER		Arrgt. of Aux. Hoist Drive	
Bridge Wheel Spacing 5'-6, 7'-6, 5'-6 (18'-6 WHEEL BASE)		Arrgt. of Trolley Drive	
Trolley Wheel Spread 13'-0 (7'-1 WHEEL BASE)		Clearance Drawing	
Maximum Wheel Load		Detail of End Trucks (D-693-B3)	J-229347
Bearings		Girder Details J-229348 &	J-229304
Special Features		Details of End Ties (D-693-X3)	J-229351
Bridge Weight 192,200 #		FARVAL LUBRICATION SYSTEM (D-693-BFL)	J-229364
TROLLEY WEIGHT 37,000 #		FARVAL LUBRICATION SYSTEM (D-693-TFL)	J-229331

ITEM	Bridge	Main Hoist	Aux. Hoist	Trolley
Motors-HP	2-65		1-100	1-15
Motor Frame	610		612	604
Motor Speed (Full Load)			51 FPM	251 FPM
Crane Speed-FPM	350		+++++	+++++
Ropes-No. & Diameter	+++++		8-3"	+++++
Lift	+++++		35'-0	+++++
Wheels-No. & Diameter	8-27"		+++++	4-18"
Brake-Armature (AISE)	2-18" φ		2-19" φ	+++++
Brakes-Air over Hyd.	2-H		2-CH	+++++
Magnet	+++++		YES	+++++

DRAWING INDEX	J-229316
CRANE WIRING DIAGRAM	J-229314
AIR CONDITIONER WIRING DIAGRAM	J-229340
CAB EQUIPMENT LAYOUT	J-229341
AIR CONDITIONING- OUTLINE DRAWINGS	J-229342
↓ ↓ ↓ ↓	J-229343
↓ ↓ ↓ ↓	J-229344
ELEMENTARY DIAGRAM FOR DUPLEX REVERSING	
PLUGGING CONTROLLER SIZE "4"-BRIDGE	J-229369
(2 SHEETS)	J-229370
CONNECTIONS FOR BUL. 14962 D.C. MANUAL	
MAGNETIC CONTACTOR TYPE DISCONNECT SWITCH	J-229374



BRIDGE WHEELS	J-229436
---------------	----------

SKETCH NO. _____

SI ST N^o2 SCRAP YARD OHC-51

FAIRFIELD WORK

PAGE 2 OF 2

UNITED STATES STEEL CORPORATION

BRIDGE		MC&S #	US S#	TROLLEY	MC&S #	US S#
GENERAL BRIDGE LAYOUT		D-693-B	J-229345	GENERAL ARRGT	D-693-T	J-229317
G-2 FOOTWALK MODIFICATIONS	1 OF 2		J-229315	1ST TROLLEY LAYOUT		J-229301
END MODIFICATION	1 OF 2		J-229312	SPEED REDUCER ASSEMBLY	18D-17A1	J-229333
END MODIFICATION	2 OF 2		J-229313	TR. DR. SPEED REDUCER	18D-17A	J-229332
CAB STAIRS & HANDRAIL DETAIL			J-229311	TR. RAIL SWEEP & AXLES	BHC-2322	J-229330
CAB MODIFICATION			J-229310	TR. AXLES		J-229329
CAB ARRGT			J-229309	BEARING CAP, COUPLING, DR. AXLES,		
TRUSS MODIFICATIONS			J-229308	IDLER AXLES AND TR. WHEELS		J-229328
G-1 FOOTWALK MODIFICATIONS	1 OF 2		J-229306	BEARING CAPSULES, GREASE RETAINERS,		
G-1 FOOTWALK MODIFICATIONS	2 OF 2		J-229307	A.H. MOTOR COUPLING AND OIL SEALS FOR		
GIRDER MODIFICATIONS	1 OF 2		J-229304	DRUM HUBS		J-229327
GIRDER MODIFICATIONS	2 OF 2		J-229339	A.H. REDUCER, 25T HOOK, DRUM SHAFT,		
EQUALIZER TRUCK STRUCTURAL ASSY		D-693-B3	J-229347	A.H. DRUM, STANDARD CABLE CLIP		J-229326
WELDED BOX GIRDER		D-693-X	J-229348	25TON BOTTOM BLOCK - ASSEMBLY	ID-825A1	J-229325
MACHINERY LAYOUT		D-693-B1	J-229346	TOP BLOCK SHEAVE ASSEMBLY & DETAILS	D-693-T10	J-229324
G-1 VERTICAL CONNECTION ANGLES		D-693-X1	J-229349	AUX. HOIST SHEAVE - HANGERS	D-693-T5	J-229323
END TIE & SADDLE		D-693-X2	J-229350	A.H. SPEED REDUCER & TROLLEY TRUCK		
SQUARING PLATE DETAILS		D-693-X3	J-229351	STRUCTURAL: FOR 25TON CAP.	D-693-T3	J-229322
LADDERS ON G-1 SIDE		D-693-X4	J-229352	M.H. SPEED REDUCER & TROLLEY TRUCK		
TRUSS & G-1 FOOTWALK		D-693-TR	J-229353	STRUCTURAL: FOR 25TON CAP.	D-693-T2	J-229321
BRIDGE CONDUCTOR SYSTEM		D-693-B4	J-229354	TROLLEY DECK MACHINING	D-693-T1M	J-229320
TRUSS & PLATFORM LAYOUT		D-693-TR1	J-229355	PLATE DETAILS - TROLLEY CENTER STRUCT.	D-693-T1A	J-229319
MOTOR PLATFORM & PEDESTAL		D-693-A	J-229356	TROLLEY CENTER STRUCTURAL	D-693-T1	J-229318
LINE BORED SPEED REDUCER - HIGH				TROLLEY FRAME MODIFICATION - CUTTING		
SPEED - BRIDGE DRIVE		36D-4	J-229357	DIAGRAM	1 OF 3	J-229302
SINGLE REDUCTION - BR. DR. CATWALK				TROLLEY FRAME MODIFICATIONS - PLANS		
MOUNT		18D-24	J-229358	AND ELEVATIONS	2 OF 3	J-229303
SPEED REDUCER DETAILS		18D-20A1	J-229359	TROLLEY FRAME MODIFICATIONS - SECTIONS		
27" φ TRACK WHEEL ASSY		D-693-B2	J-229360	AND B/M	3 OF 3	J-229305
BRAKE BASE, 18" φ BRAKE WHEEL, BRIDGE				SPEED REDUCER - HOIST DR. AUX. TROLLEY	36D-11AAH	J-229334
WHEELS, LINE SHAFTS, MOTOR BASE				SPEED REDUCER - DETAILS HOIST DR.	36D-11AAH	J-229335
AND BRIDGE AXLES			J-229361	TR. WHEEL & BEARING ASS'Y	22D-77	J-229336
BRIDGE AXLES, CABLE REEVING DIAGRAM,				OUTBOARD BEARING ASSY - DRUM SHAFT	10D-4A90	J-229337
AND BOLT LISTINGS			J-229362	DRUM SHAFT, BRAKE WHEEL, A.H. FLOATING		
LINE SHAFT COUPLING LAYOUT		A-693-BL	J-229363	SHAFT & COUPLING A.H. MOTOR		J-229338
INSULATED CAB		D-693-K	J-229365	ELEMENTARY DIAGRAM FOR LTI REVERSING		
CAB WINDOW DETAILS		D-693-K1	J-229366	PLUGGING - CRANE CONTROL - TROLLEY	J-229371	J-229372
G-2 FOOTWALK MODIFICATIONS	2 OF 2		J-229368	CONNECTIONS FOR LTI REVERSING		
INSULATED CAB DOOR		D-693-K2	J-229367	DYNAMIC LOWING HOIST CONTROLLER		J-229373